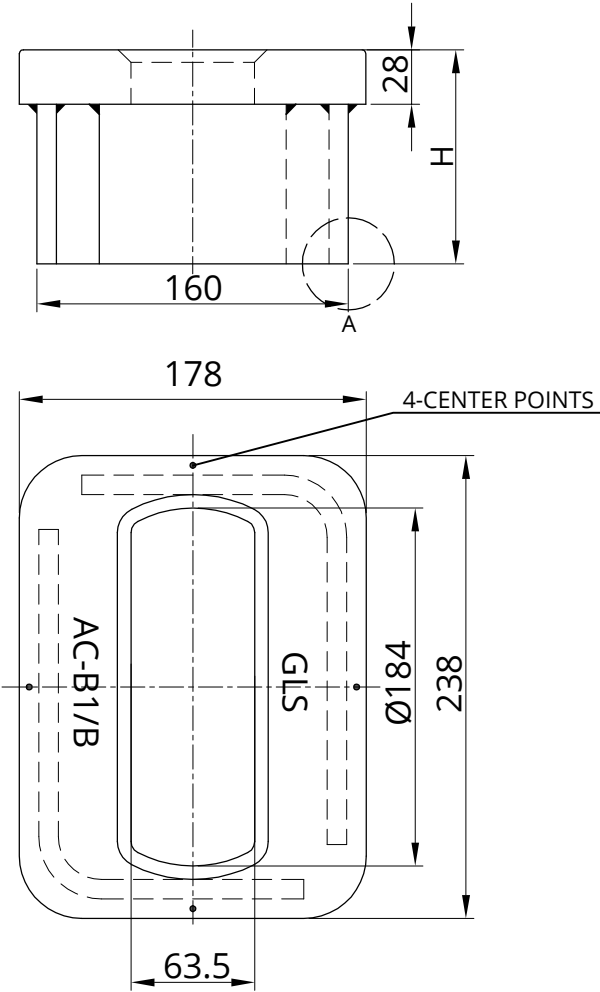
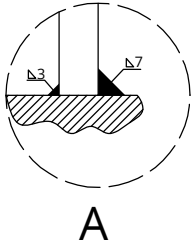


# SINGLE RAISED FOUNDATION

AC-B1/B



Welding recommendation



| TYPE                         | H                | Weight       |
|------------------------------|------------------|--------------|
| AC-B1/B/184/110              | 110              | 10.6 kg      |
| AC-B1/B/184/H                | -                | -            |
| Other height(H) upon request |                  |              |
| MATERIAL                     | STRUCTURAL STEEL |              |
| FINISH                       | SHOP PRIMER      |              |
| LOADS                        | SHEAR [kN]       | TENSION [kN] |
| BREAKING LOAD                | 420              | 500          |
| SAFE WORKING LOAD            | 210              | 250          |